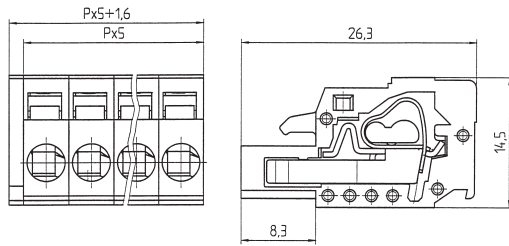
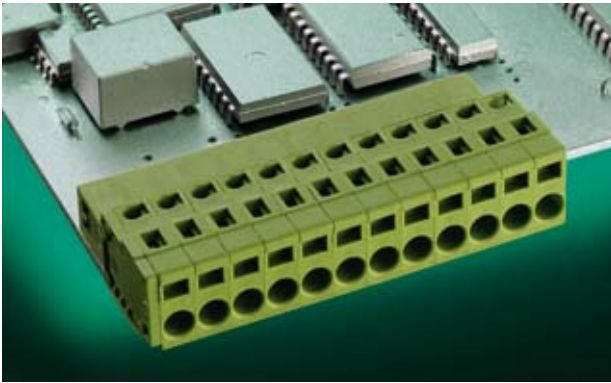


AK 3950



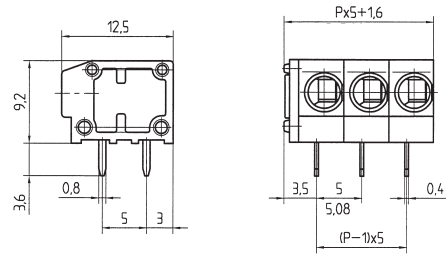
P = No. of poles



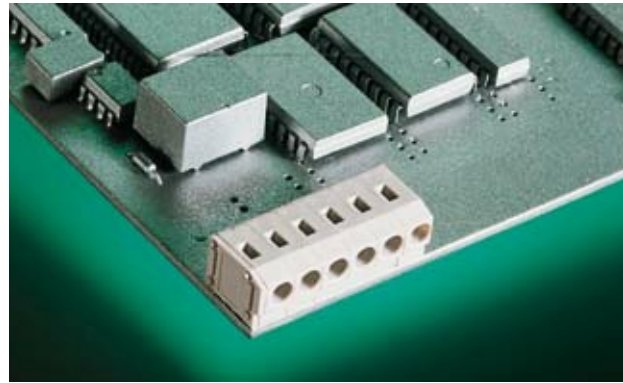
AK 3950/.. - 5,0 - green

**1-24 poles, Spacing 5,0 mm
insert required no. of poles ..**

AK 4100






P = No. of poles



AK 4100/.. - 5,0 - slade grey

**1-n poles, Spacing 5,0 mm
insert required no. of poles ..**

Ratings:

			
	UL 1059	CSA 22.2 No. 158	VDE 0627
Rated Voltage	300 V	300 V	250 V
Rated Current	15 A	15 A	12 A (T60)
Wire Size	AWG 28-12	AWG 28-12	2,5 mm ²
Test Voltage			2,21 kV

Max. Rated Cross Section

Single Wire (solid)	2,5 mm ²
Stranded Wire (flexible)	2,5 mm ²
Stranded wire with Ferrules	1,5 mm ²




Dimensions

Spacing	5,0 mm
Stripped Length	8,5 mm

Materials

Insulating Material	PA
Flammability Class	UL94 V-0
Temperature Range	-30°C/+105°C
Cage clamp	stainless steel
Contact	Cu
Colour	green
	RAL 6018

Ratings:

			
	UL 1059	CSA 22.2 No. 158	EN 60998
Rated Voltage	300 V	300 V	250 V
Rated Current	10 A	10 A	17,5 A (T60)
Wire Size	AWG 20-14	AWG 20-14	1,5 mm ²
Test Voltage			2,0 kV

Max. Rated Cross Section

Single Wire (solid)	2,5 mm ²
Stranded Wire (flexible)	on request
Stranded wire with Ferrules	on request

Dimensions

Spacing	5,0 mm
PCB Hole Diameter	1,0 mm
Stripped Length	9,0 mm

Materials

Insulating Material	PA
Flammability Class	UL94 V-0
Temperature Range	-30°C/+105°C
Tension Spring	stainless steel
Wire Guard	Cu
Colour	slade grey
	RAL 7032