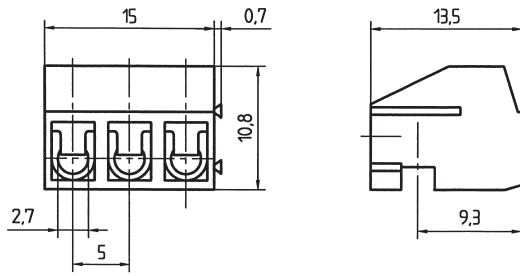


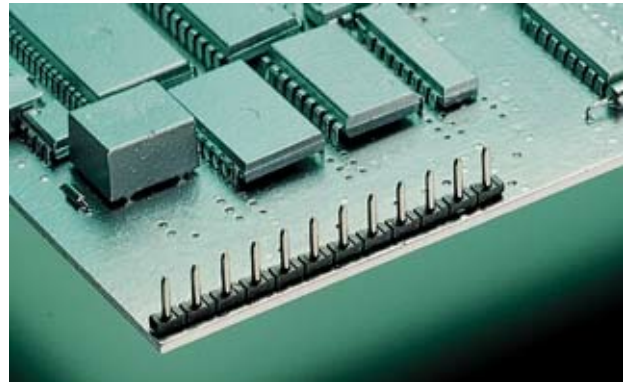
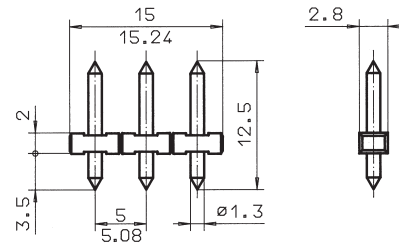
### AK 130



**AK 130/.. - 5,0 - grey**

**2-12 poles, Spacing 5,0 mm  
insert required no. of poles ..**




### STL(Z) 130 VERTICAL



**STL(Z) 130/.. - 5,0 (5,08) - V - black**

**2-24 poles, Spacing 5,0 mm or 5,08 mm  
insert required no. of poles ..**

#### Ratings:

			
	UL 1059	CSA 22.2 No. 158	DIN VDE 0627
<b>Rated Voltage</b>	<b>300 V</b>	<b>300 V</b>	<b>250 V</b>
<b>Rated Current</b>	<b>10 A</b>	<b>10 A</b>	<b>10 A (T60)</b>
<b>Wire Size</b>	<b>AWG 22-14</b>	<b>AWG 22-14</b>	<b>1,5 mm<sup>2</sup></b>
<b>Rating Impulse Voltage/Dirt Level</b>			<b>4 kV/3</b>
<b>Rated Torque / Screw Size</b>			<b>0,4 Nm/M2,6</b>
<b>Max. Rated Cross Section</b>			
Single Wire (solid)			1,5 mm <sup>2</sup>
Stranded Wire (flexible)			1,0 mm <sup>2</sup>
Stranded wire with Ferrules			1,0 mm <sup>2</sup>




#### Dimensions

Spacing	5,0 mm
Stripped Length	6,0 mm

#### Materials

Insulating Material	PA
Flammability Class	UL94 V-0
Temperature Range	-30°C/+105°C
Terminal Block	CuZn
Contact	CuBe
Colour	grey
	RAL 7016

#### Ratings:

			
	UL 1059	CSA 22.2 No. 158	DIN VDE 0627
<b>Rated Voltage</b>	<b>300 V</b>	<b>300 V</b>	<b>250 V</b>
<b>Rated Current</b>	<b>10 A</b>	<b>10 A</b>	<b>10 A (T60)</b>
<b>Rating Impulse Voltage/Dirt Level</b>			<b>4 kV/3</b>

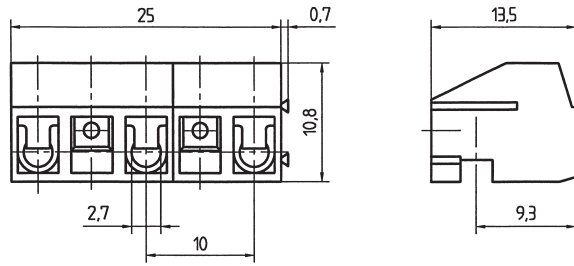
#### Dimensions

Spacing	5,0 mm (5,08 mm)
PCB Hole Diameter	1,5 mm

#### Materials

Insulating Material	PA
Flammability Class	UL94 V-0
Temperature Range	-30°C/+105°C
Contact Pin	CuZn
Colour	black
	RAL 9011

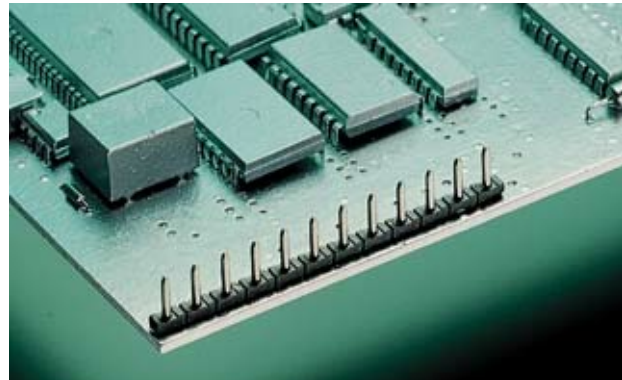
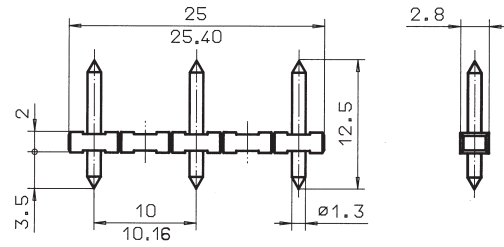
### AK 130



**AK 130/.. - 10,0 - grey**

**2-6 poles, Spacing 10,0 mm  
insert required no. of poles ..**

### STL(Z) 130 VERTICAL



**STL(Z) 130/.. - 10,0 (10,16) - V - black**

**2-12 poles, Spacing 10,0 mm or 10,16 mm  
insert required no. of poles ..**

#### Ratings:

\*Approval pending

	UL 1059	CSA 22.2 No. 158	DIN VDE 0627
Rated Voltage	300 V	300 V	630 V
Rated Current	10 A	10 A	10 A (T60)
Wire Size	AWG 22-14	AWG 22-14	1,5 mm <sup>2</sup>
Rating Impulse Voltage/Dirt Level			8 kV/3
Rated Torque / Screw Size			0,4 Nm/M2,6
<b>Max. Rated Cross Section</b>			
Single Wire (solid)			1,5 mm <sup>2</sup>
Stranded Wire (flexible)			1,0 mm <sup>2</sup>
Stranded wire with Ferrules			1,0 mm <sup>2</sup>

#### Dimensions

Spacing	10,0 mm
Stripped Length	6,0 mm

#### Materials

Insulating Material	PA
Flammability Class	UL94 V-0
Temperature Range	-30°C/+105°C
Terminal Block	CuZn
Contact	CuBe
Colour	grey
	RAL 7016

#### Ratings:

\* Approval pending

	UL 1059	CSA 22.2 No. 158	DIN VDE 0627
Rated Voltage	300 V	300 V	630 V
Rated Current	10 A	10 A	10 A (T60)
Rating Impulse Voltage/Dirt Level			8 kV/3

#### Dimensions

Spacing	10,0 mm (10,16 mm)
PCB Hole Diameter	1,5 mm

#### Materials

Insulating Material	PA
Flammability Class	UL94 V-0
Temperature Range	-30°C/+105°C
Contact Pin	CuZn
Colour	black
	RAL 9011